

# KINGS REACH

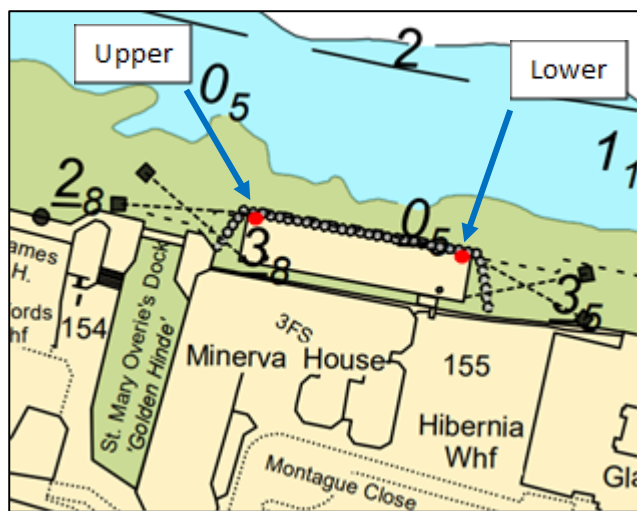
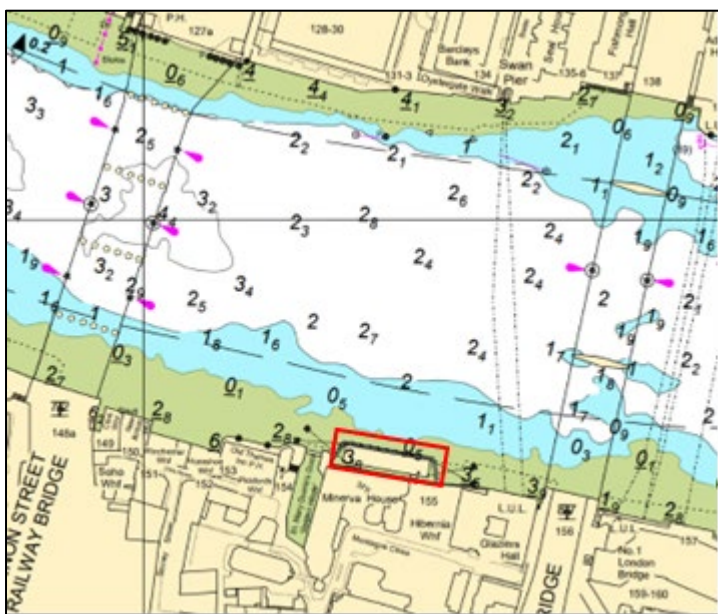
## MINERVA HOUSE NAVIGATION LIGHTS

Mariners are advised, two new navigation lights have been established on the temporary berth at Minerva House. The positions and characteristics are as listed and shown on the chart-lets below:

Minerva House Upper – 51°30.426'N 000°05.400'W - Lighted Beacon 2 FR (Vert)

Minerva House Lower - 51°30.426'N 000°05.358'W Lighted Beacon 2 FR (Vert)

These lights will be added to PLA charts, at which time this Notice to Mariners will be removed.



**22/12/2023**

Port of London Authority  
London River House, Royal Pier Road,  
Gravesend, Kent DA12 2BG

**JOSHUA REBBETTES**  
Deputy Harbour Master

**EXPIRY DATE: 15/02/2024**

TO RECEIVE FUTURE NOTICES TO MARINERS BY E-MAIL,  
PLEASE REGISTER VIA OUR WEBSITE [pla.co.uk/Subscription-to-Newsletter](http://pla.co.uk/Subscription-to-Newsletter)

Telephone calls, VHF radio traffic, CCTV and radar traffic images may be recorded in the VTS Centres at Gravesend and Woolwich



View all Active Notice to Mariners using the above QR Code