

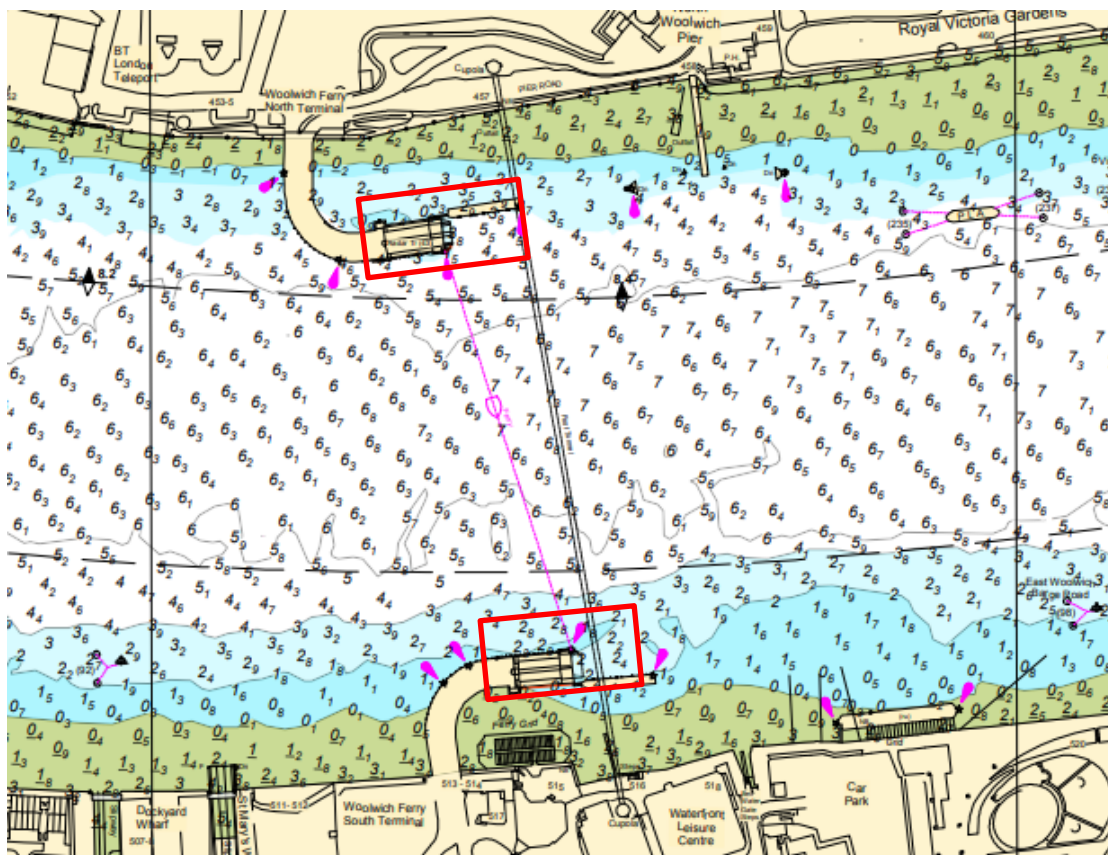
NOTICE TO MARINERS M17 of 2021

WOOLWICH REACH WOOLWICH FERRY PIERS FENDER REPLACEMENT WORKS

On 3rd and 4th April 2021, fender replacement works are expected to be undertaken on Woolwich Ferry Piers (North and South). The works will be undertaken from the work platform SCHELDEMONDE I.

The works will take place during daylight only and may require vessels to proceed with caution or at slow speed. Such requests will be broadcast by London VTS on Channel 14, as per the requirements detailed in Notice to Mariners No. 8 of 2021.

The chartlet below shows the location of the piers and the approximate working areas. Any further information will be broadcast by London VTS on Channel 14.



1st April 2021

Port of London Authority
London River House, Royal Pier Road,
Gravesend, Kent DA12 2BG

Stephanie Smith
Deputy Harbour Master



EXPIRY DATE: 6th April 2021
TO RECEIVE FUTURE NOTICES TO MARINERS BY E-MAIL,
PLEASE REGISTER VIA OUR WEBSITE www.pla.co.uk
Telephone calls, VHF radio traffic, CCTV and radar traffic images may be recorded in the VTS Centres at
Gravesend and Woolwich
All Current Notices to Mariners can be found here - <http://www.pla.co.uk/Safety/Regulations-and-Guidance/Notices-to-Mariners/Notices-to-Mariners>