

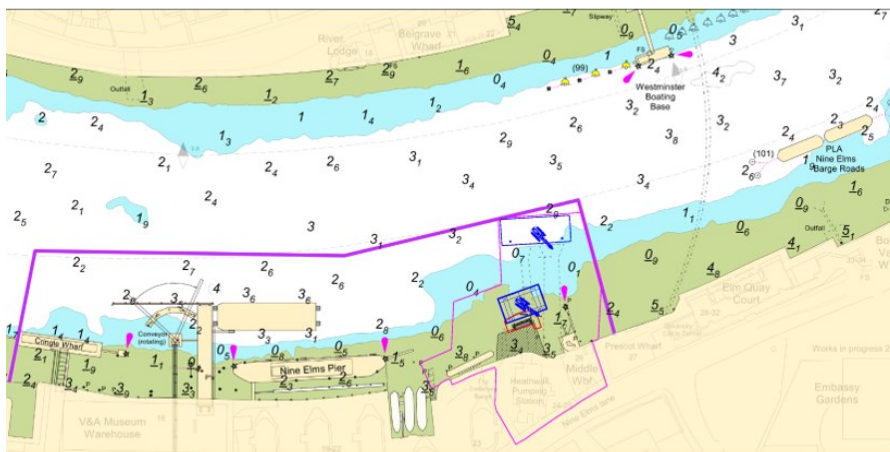
NOTICE TO MARINERS M40 of 2021

NINE ELMS REACH HEATHWALL PUMPING STATION CONSTRUCTION WORKS

Mariners are advised that on or about 27th September 2021 contractors working on the Tideway Tunnel Project will commence construction of a small sheet piled cofferdam at the Heathwall Pumping Station worksite.

Works to construct will be supported by a Jack up Barge, Spud Leg Barge, and a hopper barge, with plant working from the barges, but also at low tide, directly on the foreshore. Moored positions of barges and those supporting the Jack Up will depend on the tide conditions, resulting in barges being moored in their most riverwards locations at low tide. Works to construct the cofferdam are expected to be on going until mid-January 2022.

The Chartlet below shows the location of the cofferdam construction and most riverward barge mooring locations.



The vessels involved will maintain a listening watch on VHF channel 14. At times RY flags will be exhibited in conjunction with “proceed with caution / slow down requests” in VTS broadcasts. Vessels are requested to be mindful of the nature of the works, their proximity to the channel edge, and their wash when passing the works particularly with respect to crane lifting operations.

Further details will be broadcast by London VTS on VHF Channel 14.

Terry Lawrence
Harbour Master (TTT)

21 September 2021

Port of London Authority
London River House, Royal Pier Road,
Gravesend, Kent DA12 2BG



EXPIRY DATE: 31 January 2022
TO RECEIVE FUTURE NOTICES TO MARINERS BY **E-MAIL**,
PLEASE REGISTER VIA OUR WEBSITE www.pla.co.uk
Telephone calls, VHF radio traffic, CCTV and radar traffic images may be recorded in the VTS Centres at Gravesend and Woolwich
All Current Notices to Mariners can be found here - <http://www.pla.co.uk/Safety/Regulations-and-Guidance/Notices-to-Mariners/Notices-to-Mariners>