

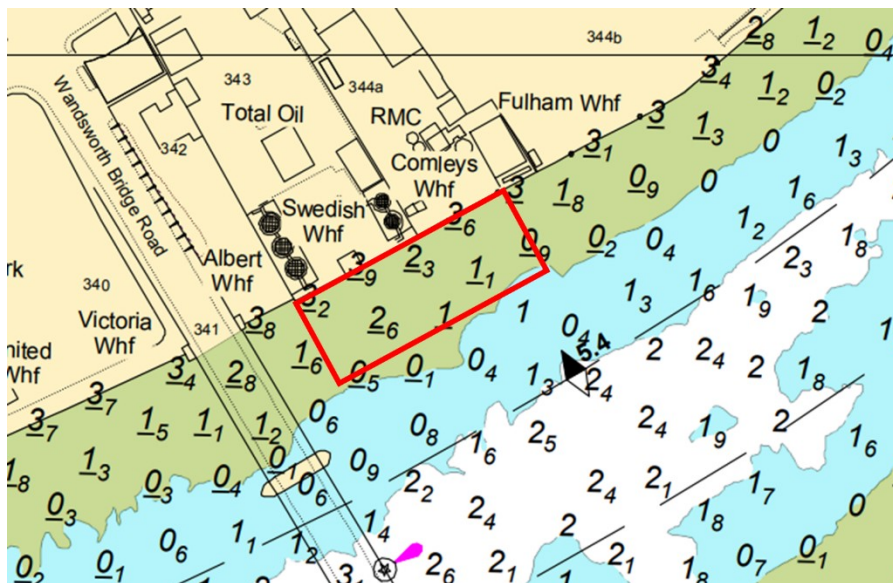
## NOTICE TO MARINERS      M46 of 2022

### BATTERSEA REACH DREDGING OPERATIONS

On or about 26<sup>th</sup> July 2022, marine contractors working on behalf of Cemex will be undertaking plough dredging operations at Comleys Wharf, which will take approximately 6-weeks.

In order to accommodate these works, the workboat EMILIA D will undertake plough dredging on the approach channel to Comleys Wharf. Dredge operations will take place over high water spring tides and the ebbing tide.

The chartlet below indicates the approximate footprint of the marine works.



The EMILIA D will display lights and signals as per the International Regulations for Prevention of Collision at Sea (27).

Requests for vessels to proceed with caution or pass at slow speed will be made by London VTS on VHF Ch. 14, in accordance with the Port of London Authority's [Port Information Guide](#), under 'London VTS', section 4. In such case, EMILIA D should display 'RY' signals.

Further information will be broadcast by **London VTS** on Channel 14.

19/07/2022

Port of London Authority  
London River House, Royal Pier Road,  
Gravesend, Kent DA12 2BG

**DARREN JA KNIGHT**  
Deputy Harbour Master

EXPIRY DATE: 04/09/2022

TO RECEIVE FUTURE NOTICES TO MARINERS BY **E-MAIL**,  
PLEASE REGISTER VIA OUR WEBSITE [www.pla.co.uk](http://www.pla.co.uk)

Telephone calls, VHF radio traffic, CCTV and radar traffic images may be recorded in the VTS Centres at Gravesend and Woolwich

All Current Notices to Mariners can be found here - <http://www.pla.co.uk/ntm>