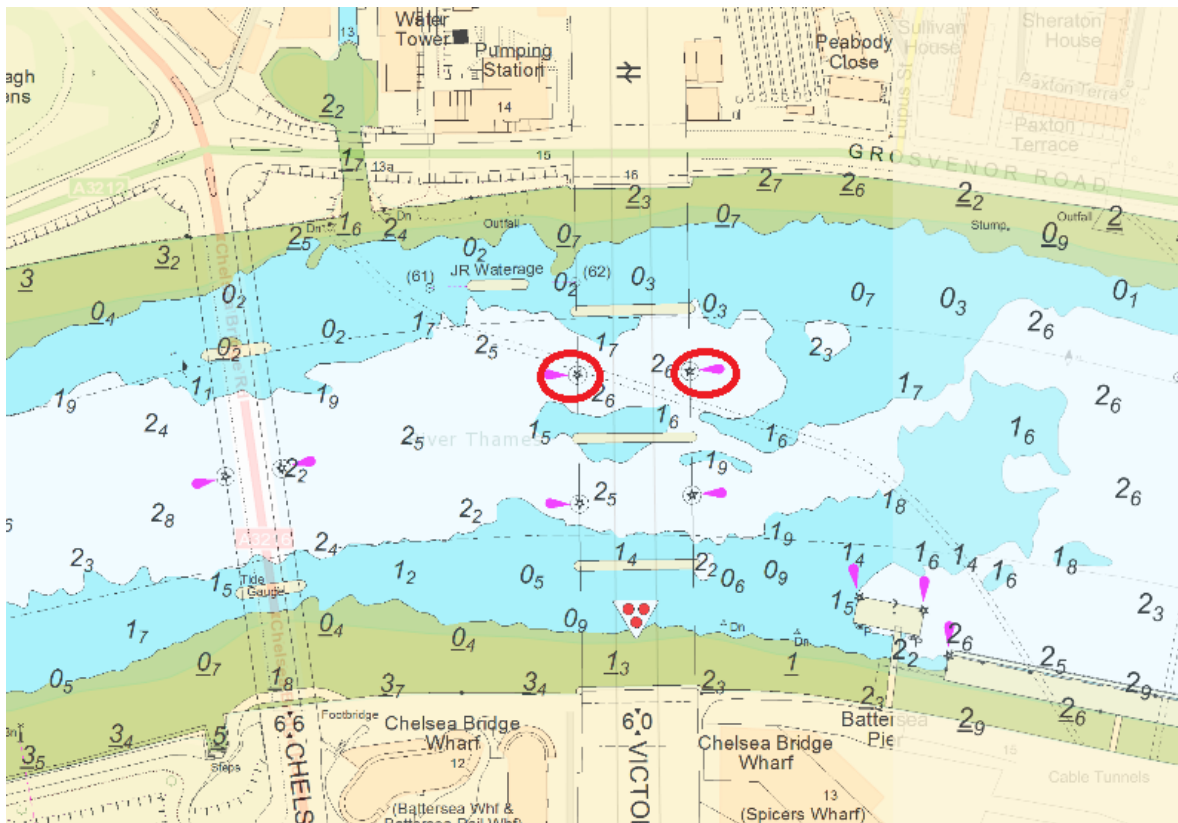


## NOTICE TO MARINERS      M4 of 2020

### NINE ELMS REACH VICTORIA RAIL BRIDGE ISOPHASE LIGHTS



Mariners are advised that the Isophase lights on the Upper and Lower side of No.2 arch on Victoria Rail Bridge are unserviceable until further notice.

Mariners are advised to exercise particular caution in this area.

**20 January 2020**

Port of London Authority  
London River House, Royal Pier Road,  
Gravesend, Kent DA12 2BG

**BOB BAKER**  
CHIEF HARBOUR MASTER



TO RECEIVE FUTURE NOTICES TO MARINERS BY **E-MAIL**,  
PLEASE REGISTER VIA OUR WEBSITE [www.pla.co.uk](http://www.pla.co.uk)  
Telephone calls, VHF radio traffic, CCTV and radar traffic images may  
be recorded in the VTS Centres at Gravesend and Woolwich  
All Current Notices to Mariners can be found here -  
<http://www.pla.co.uk/Safety/Regulations-and-Guidance/Notices-to-Mariners/Notices-to-Mariners>

